



SPRAYED ASPHALT TO BITUMEN EMULSION

Road infrastructure are subjected to external demands throughout their life due to traffic and climatic effects (vehicle traffic, UV, winter viability, mechanical impact).

Associated with the phenomenon of aging of the bitumen, the cracking phenomena, potholes, crazing, peeling and surface layer tears can then appear on pavements. The conformity of the layer which no longer guarantees its quality and its security.



The technique of the Sprayed asphalt to bitumen emulsion guarantees, in a single passage of the workshop, a durable repair of these types of degradation.

The objectives

- Stopping the degradation of the rolling layers
- Re-seal the pavement
- Guarantee the durability of the support
- Safeguarding user safety

→ SPRAYED ASPHALT TO BITUMEN EMULSION

Road infrastructure maintenance techniques

① Cleaning of the support



- Compressed air or water blowing
- Drying of the support
- Dust Removal
- Removal of friable elements likely to disrupt the adhesion of sprayed asphalt

② Bond Coat



- Projection of fast-breaking bitumen emulsion (metering between 800g/m² and 1Kg/m²)
- Preparation of the substrate

③ Blocking filling of the hole or deformed area



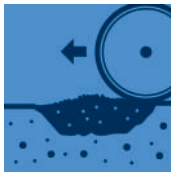
- Coated with emulsion 4/6 or 6/10 aggregates
- Filling of the area
- Catches up with the road profile on the damaged surface

④ Closing and sealing



- Coated with emulsion 2/4 aggregates
- Ensures underlayer / surface course junction

⑤ Compaction of the area



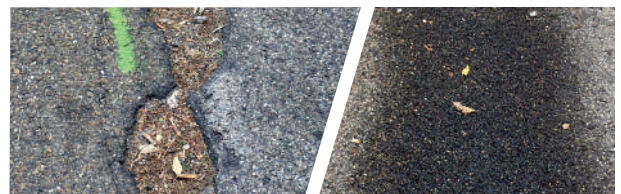
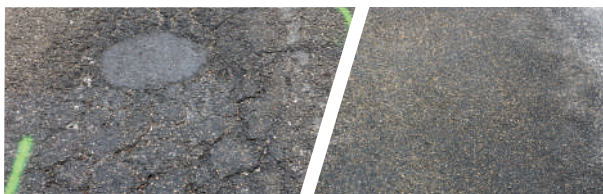
- Conforming pavement profiling
- Flat and homogeneous surface
- Low gravel discharges

Keys points

- Production method : 4 micro asphalt mixing plants
- Fast-breaking cationic emulsion
- Emulsion modified with elastomers

Benefits of this technique

- Single intervention
- Treatment adapted according to the type of degradations (size of the sprayed asphalt materials can be varied according to requirement of the road surface to be treated)
- Accuracy of implementation
- Optimized production capacity
- Control of dosages and low discharges
- Immediate return to traffic
- Promotes respect for the environment (Cold technique)



Before treatment / 6 months after treatment